

# TLC ANALYSIS OF Morning glory, HWBR and Rivea seed samples

Analysis performed on Heavenly blue Morning glory, Pakistani HBWR and Dominican Rep. Rivea C seed samples

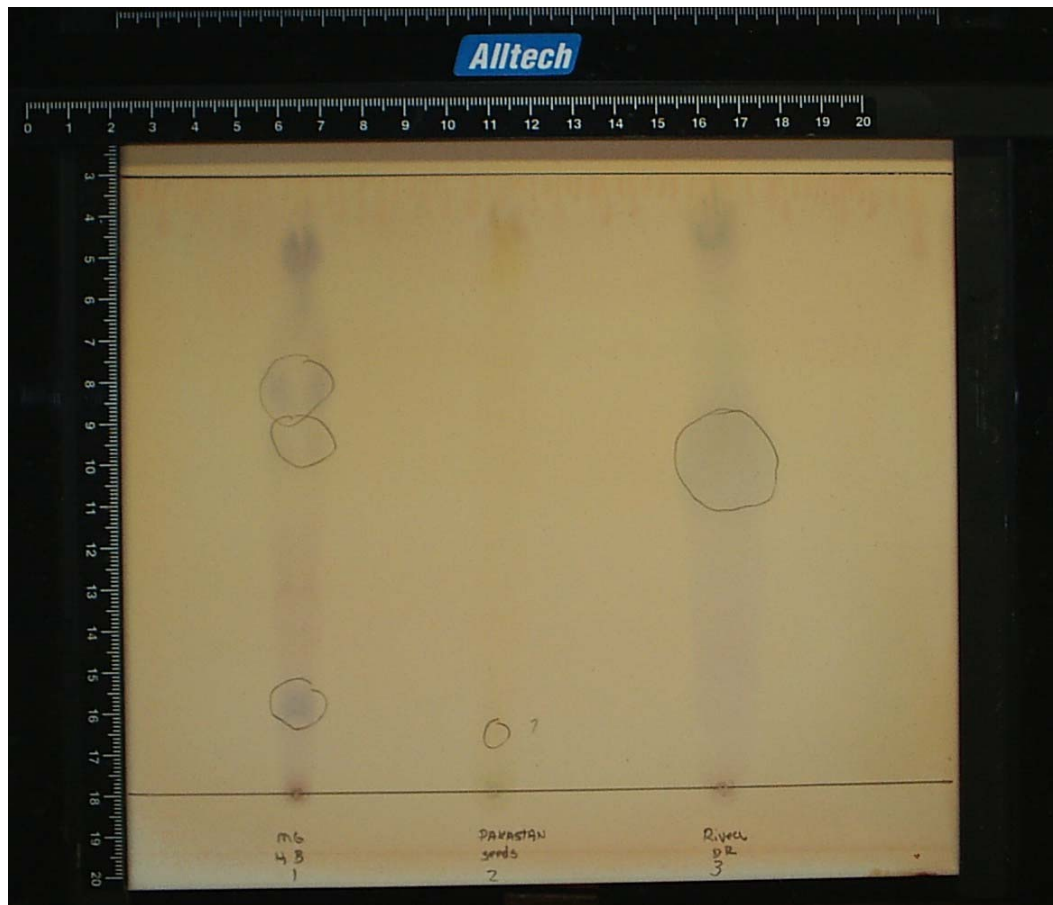
**Solvent system:** Methanol: Chloroform Ratio: 80:20

**Plate:** Precoated SIL G-25 uv-254.

**Detection:** Modified Ehrlichs/ UV 254 light

**Sample concentration:** 10 micrograms

## Test #1



1.

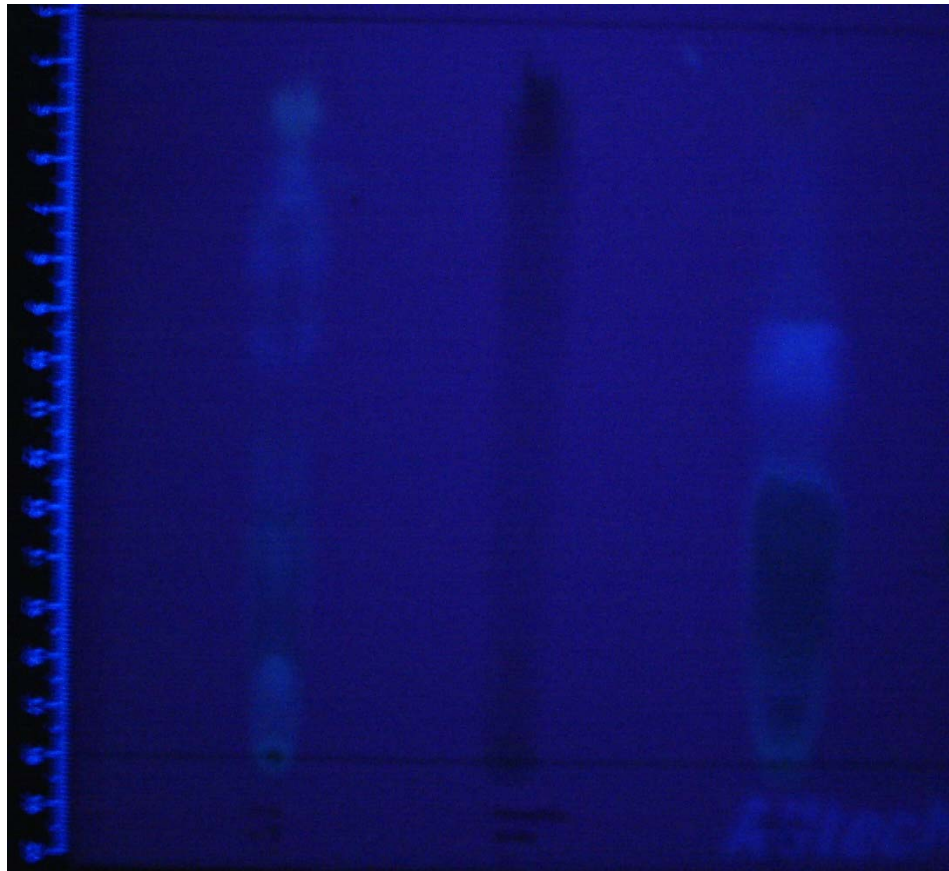
2.

3.

1. Heavenly blue Morning glory seeds
2. Pakistani HBWR seeds
3. Dominican REP. Rivea seeds

**Test #2**

**UV 254 light**



1.

2.

3.

4. Heavenly blue Morning glory seeds
5. Pakistani HBWR seeds
6. Dominican REP. Rivea seeds

**Conclusion:**

**All lysergamide alkaloids fluoresce blue under UV 254 (Test #2). All Indole alkaloids will spot blue or purple with Ehrlichs solution (Test #1) The Morning glory seeds have these alkaloids as do the Rivea C seeds. The Pakistani seeds are devoid of any Indole or related compounds.**