

## TLC ANALYSIS OF: Que Brache Blanca bark samples.

Analysis performed samples South American Que Brache Blanca bark.  
Pure Yohimbe freebase was used as a reference compound.  
Yohimbe bark was also used as a reference compound.

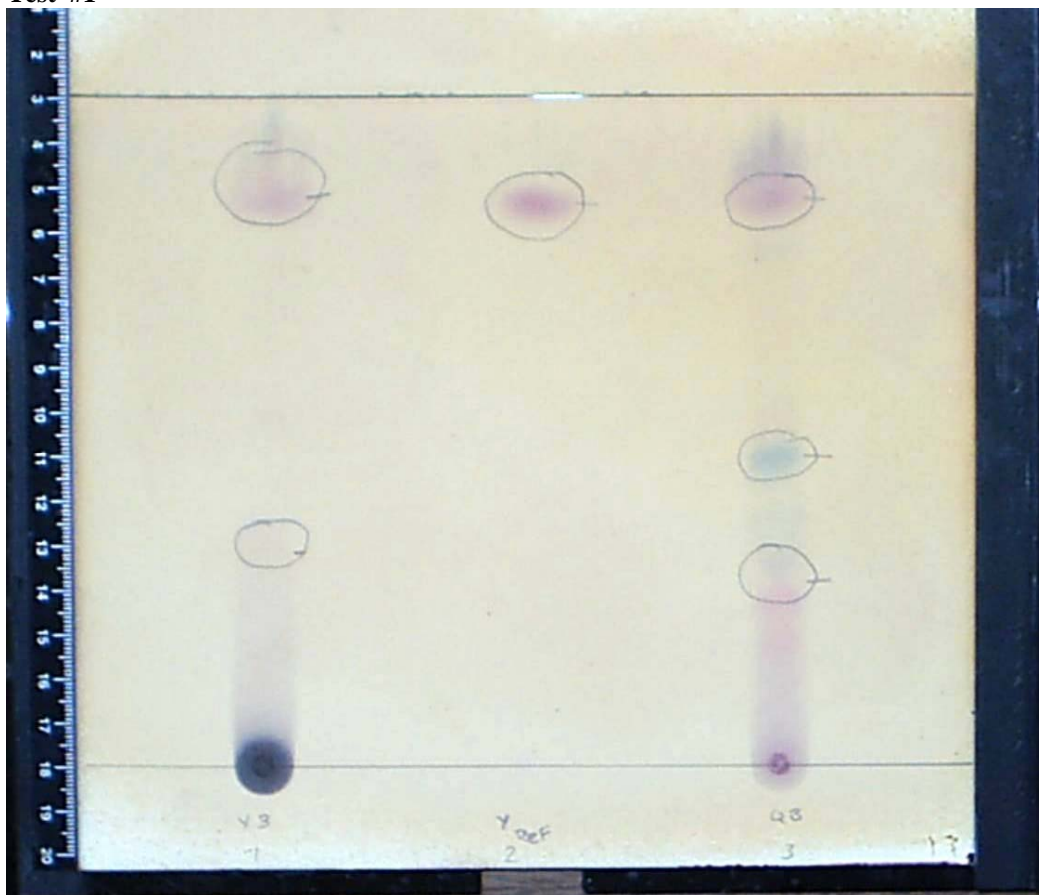
**Solvent system:** Ethyl Acetate:Methanol: Ammonia Ratio: 70:29:1

**Plate:** Precoated SIL G-25 uv-254. 15cm run for 90 minutes. Performed at 22°C.

**Detection:** Modified Ehrlichs

**Sample concentration:** 10 micrograms

**Test #1**



1. Yohimbe bark extract
2. Reference Yohimbe Freebase
3. Que Brache Blanca bark.

The spotting near the solvent front is Yohimbe. All 3 materials spot in accordance to the reference sample.

The spots with the lower Rf values are lowest Quebrachamine, second Aspidospermine.

Reference Literature: Plant Drug Analysis second edition, H. Wagner, S. Bladt. ppg. 24 fig. 4A.  
Alternative reference: Journal of Chromatography-volume 23A.